

STANDARD DEPARTURE CHART  
INSTRUMENT(SID) - ICAO

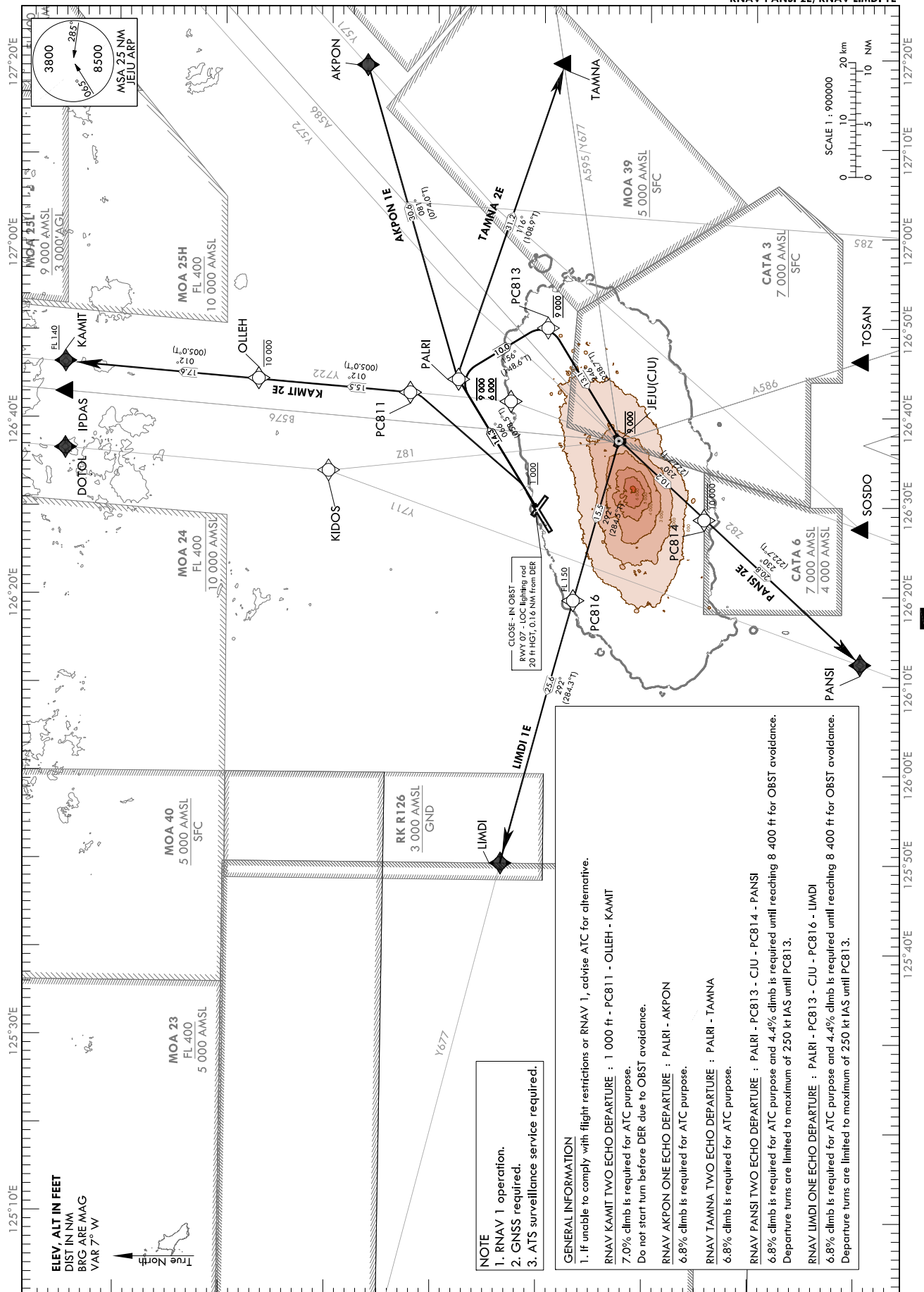
TRANSITION ALT 14 000  
TRANSITION LVL FL 140

JEJU DEP 119.225  
121.2  
JEJU TWR 118.2  
118.55

JEJU/Jeju Intl(RKPC)

RWY 07  
RNAV KAMIT 2E  
RNAV AKPON 1E, RNAV TAMNA 2E  
RNAV PANSI 2E, RNAV LIMDI 1E

Note : Departure under ICAO Flight Procedures.



## Standard Instrument Departure Procedure Coding Tables

## RNAV KAMIT 2E

Serial Number	Path Descriptor	Waypoint Identifier	Fly-over	Course/Track °M(°T)	Distance (NM)	Turn direction	Altitude (ft)	Speed (kt)	Coordinates	VPA/RDH	Navigation specification	Remarks
001	CA	-	-	066(058.5)	-	-	@1 000	-	-	-	RNAV 1	-
002	DF	PC811	-	-	-	L	-	-	33°42'12.1"N 126°42'48.8"E	-	RNAV 1	-
003	TF	OLLEH	-	012(005.0)	15.5	-	-10 000	-	33°57'42.2"N 126°44'26.5"E	-	RNAV 1	-
004	TF	KAMIT	-	012(005.0)	17.6	-	+FL 140	-	34°15'14.1"N 126°46'17.7"E	-	RNAV 1	-

## RNAV AKPON 1E

Serial Number	Path Descriptor	Waypoint Identifier	Fly-over	Course/Track °M(°T)	Distance (NM)	Turn direction	Altitude (ft)	Speed (kt)	Coordinates	VPA/RDH	Navigation specification	Remarks
001	CF	PALRI	-	066(058.5)	14.3	-	-9 000 +6 000	-	33°38'27.2"N 126°44'37.4"E	-	RNAV 1	-
002	TF	AKPON	-	081(074.0)	30.6	-	-	-	33°46'49.6"N 127°19'53.0"E	-	RNAV 1	-

## RNAV TAMNA 2E

Serial Number	Path Descriptor	Waypoint Identifier	Fly-over	Course/Track °M(°T)	Distance (NM)	Turn direction	Altitude (ft)	Speed (kt)	Coordinates	VPA/RDH	Navigation specification	Remarks
001	CF	PALRI	-	066(058.5)	14.3	-	-9 000 +6 000	-	33°38'27.2"N 126°44'37.4"E	-	RNAV 1	-
002	TF	TAMNA	-	116(108.9)	31.2	-	-	-	33°28'15.5"N 127°19'53.0"E	-	RNAV 1	-

## RNAV PANSI 2E

Serial Number	Path Descriptor	Waypoint Identifier	Fly-over	Course/Track °M(°T)	Distance (NM)	Turn direction	Altitude (ft)	Speed (kt)	Coordinates	VPA/RDH	Navigation specification	Remarks
001	CF	PALRI	-	066(058.5)	14.3	-	-	-250	33°38'27.2"N 126°44'37.4"E	-	RNAV 1	-
002	TF	PC813	-	156(148.6)	10.0	-	@9 000	-250	33°29'55.5"N 126°50'50.0"E	-	RNAV 1	-
003	TF	CJU	-	246(238.7)	13.1	-	@9 000	-	33°23'04.6"N 126°37'26.8"E	-	RNAV 1	-
004	TF	PC814	-	230(222.8)	10.2	-	-10 000	-	33°15'36.4"N 126°29'13.5"E	-	RNAV 1	-
005	TF	PANSI	-	230(222.7)	20.8	-	-	-	33°00'14.4"N 126°12'25.1"E	-	RNAV 1	-

## RNAV LIMDI 1E

Serial Number	Path Descriptor	Waypoint Identifier	Fly-over	Course/Track °M(°T)	Distance (NM)	Turn direction	Altitude (ft)	Speed (kt)	Coordinates	VPA/RDH	Navigation specification	Remarks
001	CF	PALRI	-	066(058.5)	14.3	-	-	-250	33°38'27.2"N 126°44'37.4"E	-	RNAV 1	-
002	TF	PC813	-	156(148.6)	10.0	-	@9 000	-250	33°29'55.5"N 126°50'50.0"E	-	RNAV 1	-
003	TF	CJU	-	246(238.7)	13.1	-	@9 000	-	33°23'04.6"N 126°37'26.8"E	-	RNAV 1	-
004	TF	PC816	-	292(284.5)	15.5	-	+FL 150	-	33°26'56.5"N 126°19'30.8"E	-	RNAV 1	-
005	TF	LIMDI	-	292(284.3)	25.6	-	-	-	33°33'13.3"N 125°49'53.0"E	-	RNAV 1	-

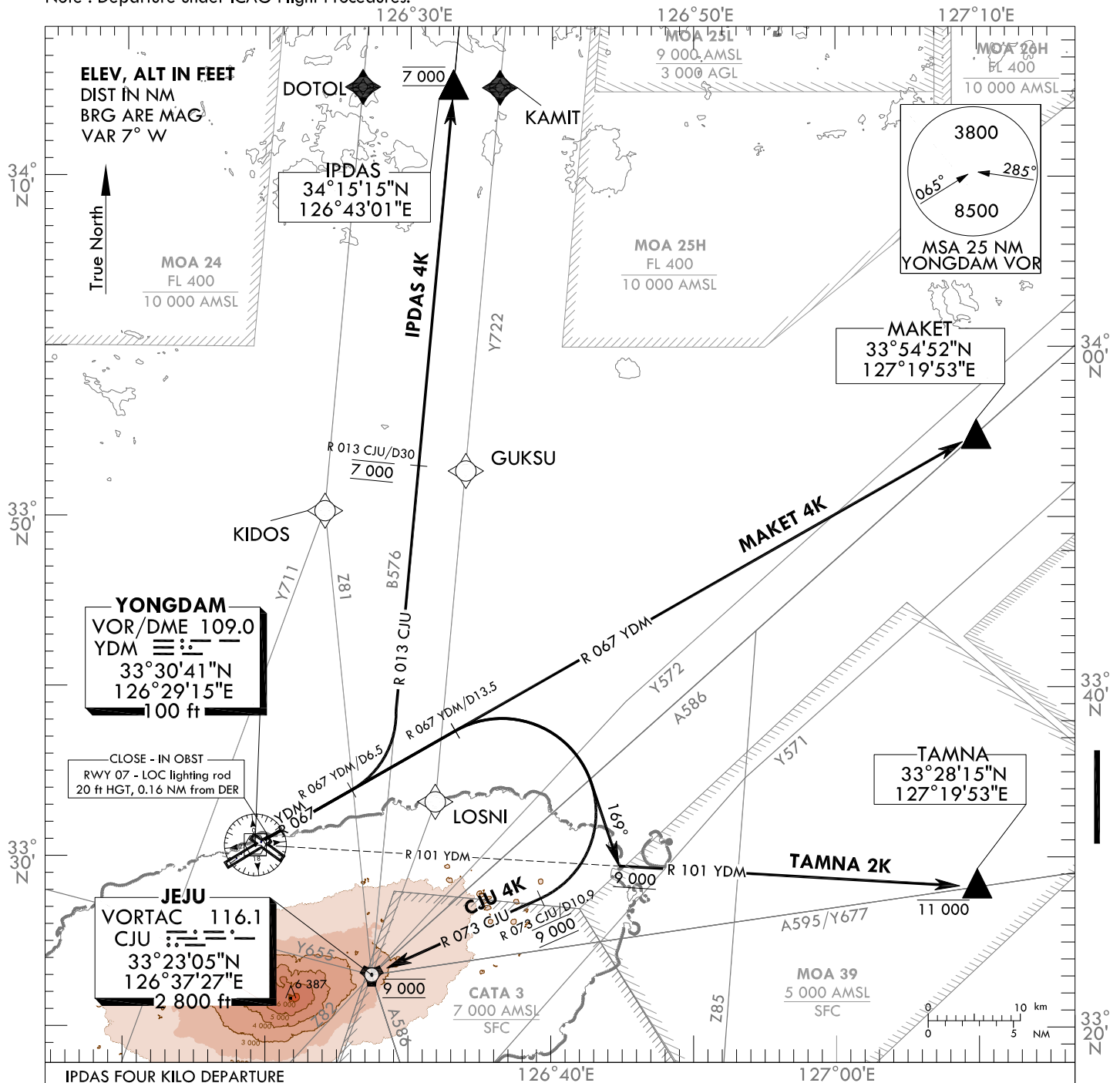
STANDARD DEPARTURE CHART  
INSTRUMENT(SID) - ICAO

TRANSITION ALT 14 000  
TRANSITION LVL FL 140

JEJU DEP 119.225  
121.2  
JEJU TWR 118.2  
118.55

JEJU/Jeju Intl(RKPC)  
RWY 07  
IPDAS 4K, MAKET 4K  
TAMNA 2K, CJU 4K

Note : Departure under ICAO Flight Procedures.



IPDAS FOUR KILO DEPARTURE

Climb on R 067 YDM until D6.5, then turn Left to intercept R 013 CJU then proceed direct to IPDAS.

\* Minimum 4.9% CG is required for ATC purpose.

\* Cross R 013 CJU/D30 at 7 000 ft and maintain 7 000 ft unless otherwise directed by ATC.

MAKET FOUR KILO DEPARTURE

Climb on R 067 YDM, then proceed direct to MAKET.

\* Minimum 5.0% CG is required for ATC purpose.

TAMNA TWO KILO DEPARTURE

Climb on R 067 YDM until D13.5, then turn Right HDG 169° to intercept R 101 YDM then proceed direct to TAMNA.

\* Minimum 5.4% CG is required for ATC purpose.

\* Maintain at or above 9 000 ft before intercepting R 101 YDM and Cross TAMNA at or below 11 000 ft unless otherwise directed by ATC.

JEJU FOUR KILO DEPARTURE

Climb on R 067 YDM until D13.5, then turn Right to intercept R 073 CJU/D10.9, then proceed direct to CJU.

\* Minimum 5.4% CG is required for ATC purpose and 3.8% CG is required until 6 800 ft for OBST avoidance.

\* Cross R 073 CJU/D10.9 at 9 000 ft and maintain 9 000 ft unless otherwise directed by ATC.

Change : Establishment of close-in OBST.

INTENTIONALLY

LEFT

BLANK

STANDARD DEPARTURE CHART  
INSTRUMENT(SID) - ICAO

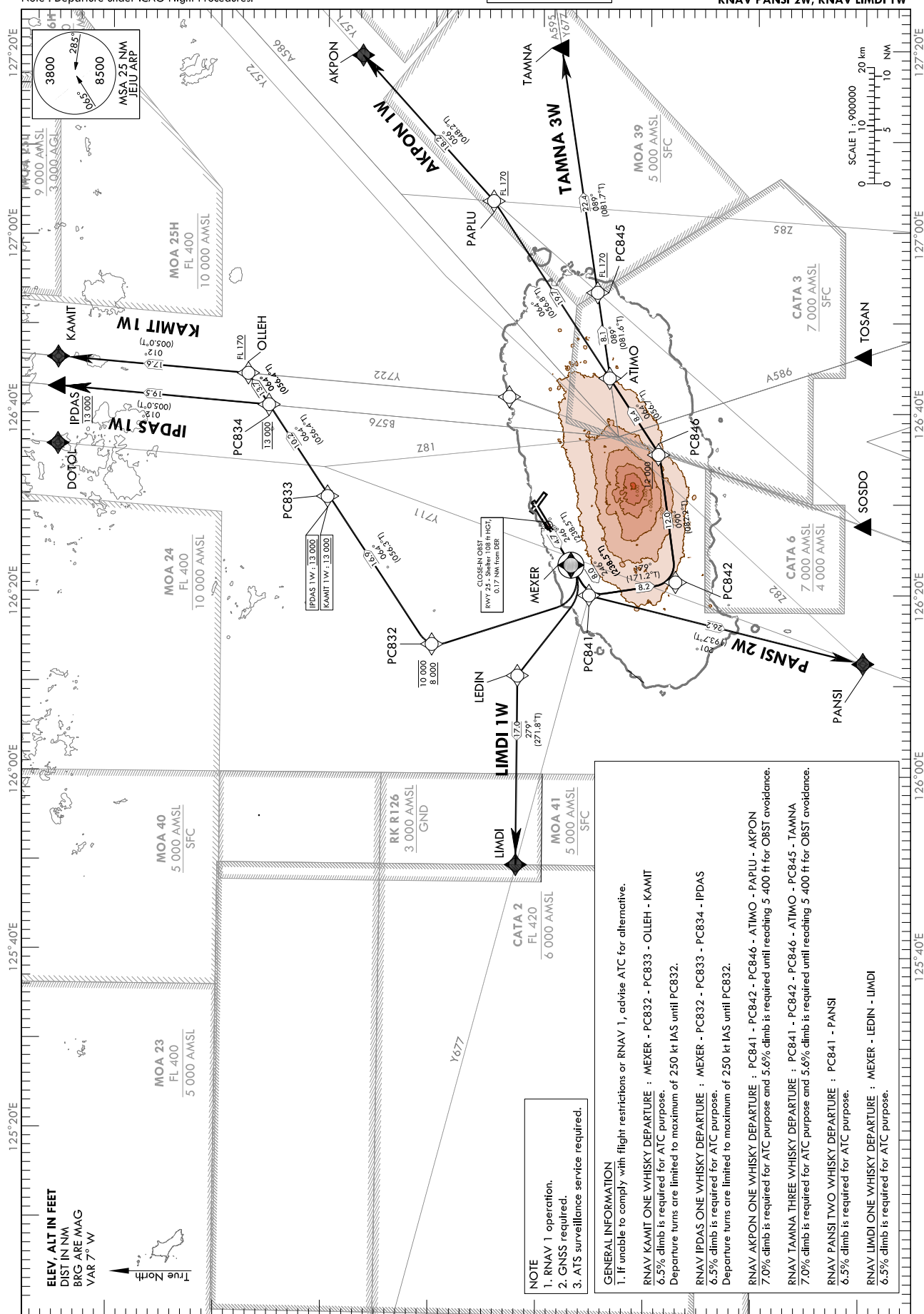
TRANSITION ALT 14 000  
TRANSITION LVL FL 140

JEJU DEP 119.225  
121.2  
JEJU TWR 118.2  
118.55

JEJU/Jeju Intl(RKPC)

RWY 25  
RNAV KAMIT 1W, RNAV IPDAS 1W  
RNAV AKPON 1W, RNAV TAMNA 3W  
RNAV PANSI 2W, RNAV LIMDI 1W

Note : Departure under ICAO Flight Procedures.



JEJU/Jeju Intl(RKPC)

RWY 25

RNAV KAMIT 1W, RNAV IPDAS 1W

RNAV AKPON 1W

## AERONAUTICAL DATA TABULATION

## Standard Instrument Departure Procedure Coding Tables

## RNAV KAMIT 1W

Serial Number	Path Descriptor	Waypoint Identifier	Fly-over	Course/Track °M(°T)	Distance (NM)	Turn direction	Altitude (ft)	Speed (kt)	Coordinates	VPA/RDH	Navigation specification	Remarks
001	CF	MEXER	Y	246(238.5)	4.7	-	-	-250	33°27'28.0"N 126°23'12.0"E	-	RNAV 1	-
002	DF	PC832	-	-	-	R	-10 000 +8 000	-250	33°40'46.0"N 126°13'51.9"E	-	RNAV 1	-
003	TF	PC833	-	064(056.3)	16.9	-	+13 000	-	33°50'08.8"N 126°30'44.8"E	-	RNAV 1	-
004	TF	OLLEH	-	064(056.4)	13.7	-	+FL 170	-	33°57'42.2"N 126°44'26.5"E	-	RNAV 1	-
005	TF	KAMIT	-	012(005.0)	17.6	-	-	-	34°15'14.1"N 126°46'17.7"E	-	RNAV 1	-

## RNAV IPDAS 1W

Serial Number	Path Descriptor	Waypoint Identifier	Fly-over	Course/Track °M(°T)	Distance (NM)	Turn direction	Altitude (ft)	Speed (kt)	Coordinates	VPA/RDH	Navigation specification	Remarks
001	CF	MEXER	Y	246(238.5)	4.7	-	-	-250	33°27'28.0"N 126°23'12.0"E	-	RNAV 1	-
002	DF	PC832	-	-	-	R	-10 000 +8 000	-250	33°40'46.0"N 126°13'51.9"E	-	RNAV 1	-
003	TF	PC833	-	064(056.3)	16.9	-	@13 000	-	33°50'08.8"N 126°30'44.8"E	-	RNAV 1	-
004	TF	PC834	-	064(056.4)	10.2	-	@13 000	-	33°55'46.2"N 126°40'55.7"E	-	RNAV 1	-
005	TF	IPDAS	-	012(005.0)	19.5	-	@13 000	-	34°15'14.7"N 126°43'01.4"E	-	RNAV 1	-

## RNAV AKPON 1W

Serial Number	Path Descriptor	Waypoint Identifier	Fly-over	Course/Track °M(°T)	Distance (NM)	Turn direction	Altitude (ft)	Speed (kt)	Coordinates	VPA/RDH	Navigation specification	Remarks
001	CF	PC841	-	246(238.5)	8.0	-	-	-	33°25'42.7"N 126°19'47.8"E	-	RNAV 1	-
002	TF	PC842	-	179(171.2)	8.2	-	-	-	33°17'38.3"N 126°21'17.3"E	-	RNAV 1	-
003	TF	PC846	-	090(082.2)	12.0	-	+12 000	-	33°19'15.6"N 126°35'28.6"E	-	RNAV 1	-
004	TF	ATIMO	-	064(056.7)	8.4	-	-	-	33°23'52.5"N 126°43'51.2"E	-	RNAV 1	-
005	TF	PAPLU	-	064(056.8)	19.7	-	+FL 170	-	33°34'41.3"N 127°03'36.5"E	-	RNAV 1	-
006	TF	AKPON	-	056(048.2)	18.2	-	-	-	33°46'49.6"N 127°19'53.0"E	-	RNAV 1	-

JEJU/Jeju Intl(RKPC)  
RWY 25

RNAV TAMNA 3W

RNAV PANSI 2W, RNAV LIMDI 1W

## AERONAUTICAL DATA TABULATION

## Standard Instrument Departure Procedure Coding Tables

## RNAV TAMNA 3W

Serial Number	Path Descriptor	Waypoint Identifier	Fly-over	Course/Track °M(°T)	Distance (NM)	Turn direction	Altitude (ft)	Speed (kt)	Coordinates	VPA/ RDH	Navigation specification	Remarks
001	CF	PC841	-	246(238.5)	8.0	-	-	-	33°25'42.7"N 126°19'47.8"E	-	RNAV 1	-
002	TF	PC842	-	179(171.2)	8.2	-	-	-	33°17'38.3"N 126°21'17.3"E	-	RNAV 1	-
003	TF	PC846	-	090(082.2)	12.0	-	+12 000	-	33°19'15.6"N 126°35'28.6"E	-	RNAV 1	-
004	TF	ATIMO	-	064(056.7)	8.4	-	-	-	33°23'52.5"N 126°43'51.2"E	-	RNAV 1	-
005	TF	PC845	-	089(081.6)	8.1	-	+FL 170	-	33°25'03.2"N 126°53'24.0"E	-	RNAV 1	-
006	TF	TAMNA	-	089(081.7)	22.4	-	-	-	33°28'15.5"N 127°19'53.0"E	-	RNAV 1	-

## RNAV PANSI 2W

Serial Number	Path Descriptor	Waypoint Identifier	Fly-over	Course/Track °M(°T)	Distance (NM)	Turn direction	Altitude (ft)	Speed (kt)	Coordinates	VPA/ RDH	Navigation specification	Remarks
001	CF	PC841	-	246(238.5)	8.0	-	-	-	33°25'42.7"N 126°19'47.8"E	-	RNAV 1	-
002	TF	PANSI	-	201(193.7)	26.2	-	-	-	33°00'14.4"N 126°12'25.1"E	-	RNAV 1	-

## RNAV LIMDI 1W

Serial Number	Path Descriptor	Waypoint Identifier	Fly-over	Course/Track °M(°T)	Distance (NM)	Turn direction	Altitude (ft)	Speed (kt)	Coordinates	VPA/ RDH	Navigation specification	Remarks
001	CF	MEXER	Y	246(238.5)	4.7	-	-	-	33°27'28.0"N 126°23'12.0"E	-	RNAV 1	-
002	DF	LEDIN	-	-	-	R	-	-	33°32'42.1"N 126°10'14.9"E	-	RNAV 1	-
003	TF	LIMDI	-	279(271.8)	17.0	-	-	-	33°33'13.3"N 125°49'53.0"E	-	RNAV 1	-

Change : Amended phrase(VPA/TCH → VPA/RDH).

**INTENTIONALLY**

**LEFT**

**BLANK**



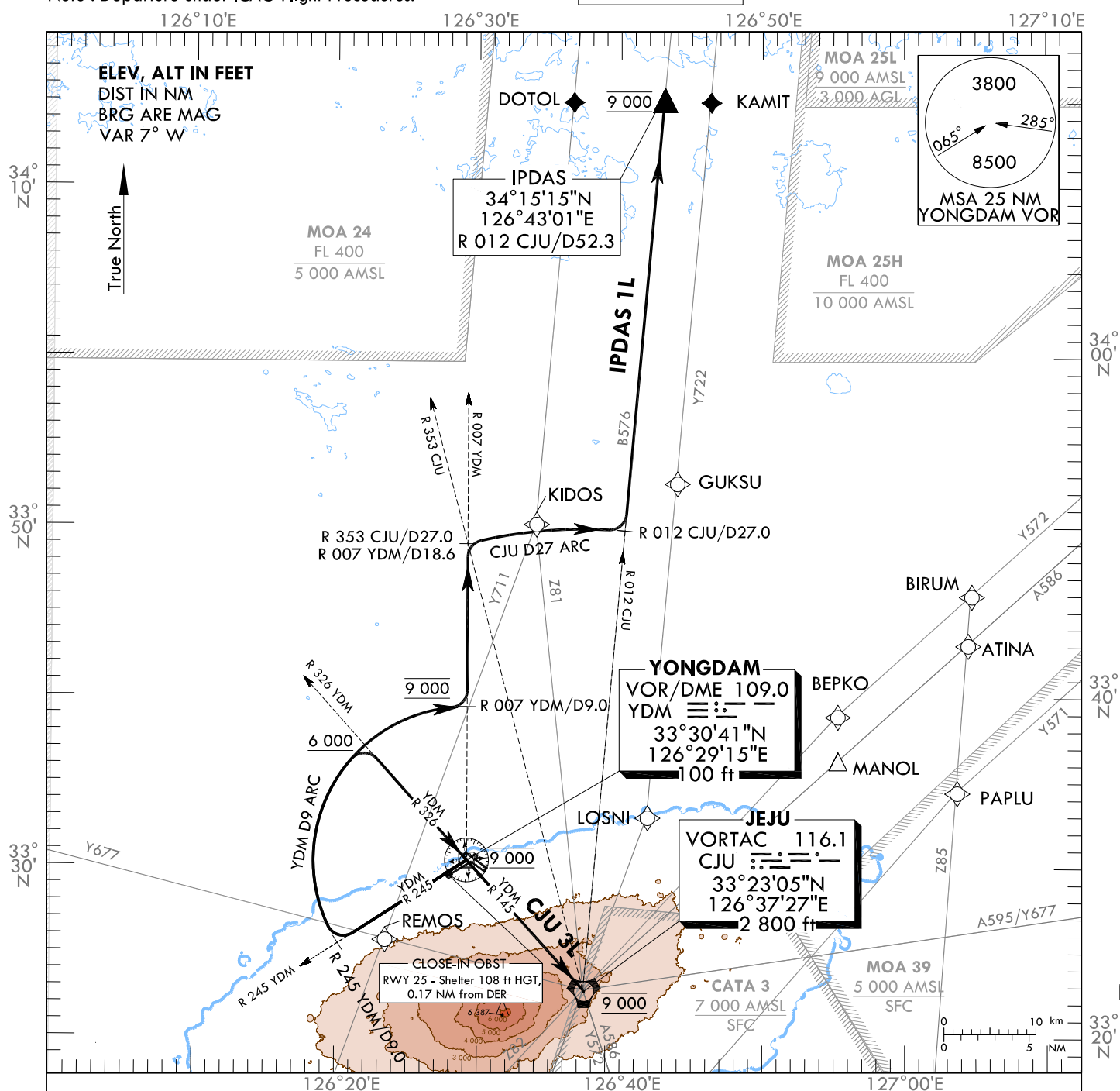
STANDARD DEPARTURE CHART  
INSTRUMENT(SID) - ICAO

TRANSITION ALT 14 000  
TRANSITION LVL FL 140

JEJU DEP 119.225  
121.2  
JEJU TWR 118.2  
118.55

JEJU/Jeju Intl(RKPC)  
RWY 25  
CJU 3L, IPDAS 1L

Note : Departure under ICAO Flight Procedures.



Change : Amended phrase(0.003 NM → 0.17 NM).

**INTENTIONALLY**

**LEFT**

**BLANK**

JEJU DEP	119.225
	121.2
JEJU TWR	118.2
	118.55

**JEJU/Jeju Intl(RKPC)**  
**RWY 31**  
**RNAV KAMIT 2N**  
**RNAV AKPON 1N**

**ELEV. ALT IN FEET**  
DIST IN NM  
BRG ARE MAG  
VAR 7° W

**True North**

**NOTE**  
1. RNAV 1 operation.  
2. GNSR required.  
3. ATS surveillance service required.

**GENERAL INFORMATION**  
1. If unable to comply with flight restrictions or RNAV 1, advise ATC for alternative.  
  
RNAV KAMIT TWO NOVEMBER DEPARTURE : PC861 - PC871 - PC872 - TOREN - OLLEH - KAMIT  
7.0% climb is required for ATC purpose.  
  
RNAV AKPON ONE NOVEMBER DEPARTURE : PC861 - PC871 - PC872 - TOREN - PC874 - AKPON  
7.0% climb is required for ATC purpose.

**MOA 24**  
FL 400  
10 000 AMSL

**MOA 25L**  
9 000 AMSL  
3 000 AGI

**MOA 39**  
5 000 AMSL  
SFC

**RK R126**  
3 000 AMSL  
GND

**MOA 41**  
5 000 AMSL  
SFC

**KAMIT 2N**  
FL 160  
IPDAS  
DOTOL

**TOREN**  
PC872  
PC871  
PC891  
PC874  
AKPON 1N

**OLLEH**  
Y711  
B576  
Y572  
A586  
Y571

**LOSNI**  
RWY 31- Utility pole 90 ft HGT,  
0.11 NM from DER

**CLOSE-IN OBST**  
RWY 31- Utility pole 90 ft HGT,  
0.11 NM from DER

**SCALE 1 : 550000**  
0 10 20 km  
0 5 10 NM

Change : Establishment of close-in OBST.

## AERONAUTICAL DATA TABULATION

## Standard Instrument Departure Procedure Coding Tables

RNAV KAMIT 2N												
Serial Number	Path Descriptor	Waypoint Identifier	Fly- °M(°T)	Course/Track	Distance (NM)	Turn direction	Altitude (ft)	Speed (kt)	Coordinates	VPA/ RDH	Navigation specification	Remarks
001	CF	PC861	-	313(305.6)	4.7	-	-	-	33°33'43.8"N 126°24'34.1"E	-	RNAV 1	-
002	TF	PC871	-	007(359.7)	5.3	-	-5 000	-	33°39'05.3"N 126°24'32.0"E	-	RNAV 1	-
003	TF	PC872	-	061(053.5)	7.0	-	-8 000	-	33°43'16.9"N 126°31'18.7"E	-	RNAV 1	-
004	TF	TOREN	-	061(053.5)	9.0	-	+11 000	-	33°48'36.8"N 126°39'57.7"E	-	RNAV 1	-
005	TF	OLLEH	-	030(022.3)	9.8	-	-12 000	-	33°57'42.2"N 126°44'26.5"E	-	RNAV 1	-
006	TF	KAMIT	-	012(005.0)	17.6	-	-FL 160	-	34°15'14.1"N 126°46'17.7"E	-	RNAV 1	-

RNAV AKPON 1N												
Serial Number	Path Descriptor	Waypoint Identifier	Fly-over	Course/Track °M(°T)	Distance (NM)	Turn direction	Altitude (ft)	Speed (kt)	Coordinates	VPA/ RDH	Navigation specification	Remarks
001	CF	PC861	-	313(305.6)	4.7	-	-	-	33°33'43.8"N 126°24'34.1"E	-	RNAV 1	-
002	TF	PC871	-	007(359.7)	5.3	-	-5 000	-	33°39'05.3"N 126°24'32.0"E	-	RNAV 1	-
003	TF	PC872	-	061(053.5)	7.0	-	-8 000	-	33°43'16.9"N 126°31'18.7"E	-	RNAV 1	-
004	TF	TOREN	-	061(053.5)	9.0	-	+11 000	-	33°48'36.8"N 126°39'57.7"E	-	RNAV 1	-
005	TF	PC874	-	097(089.8)	26.0	-	-	-	33°48'38.0"N 127°11'08.8"E	-	RNAV 1	-
006	TF	AKPON	-	111(103.9)	7.5	-	-	-	33°46'49.6"N 127°19'53.0"E	-	RNAV 1	-

STANDARD DEPARTURE CHART  
INSTRUMENT(SID) - ICAO

TRANSITION ALT 14 000  
TRANSITION LVL FL 140

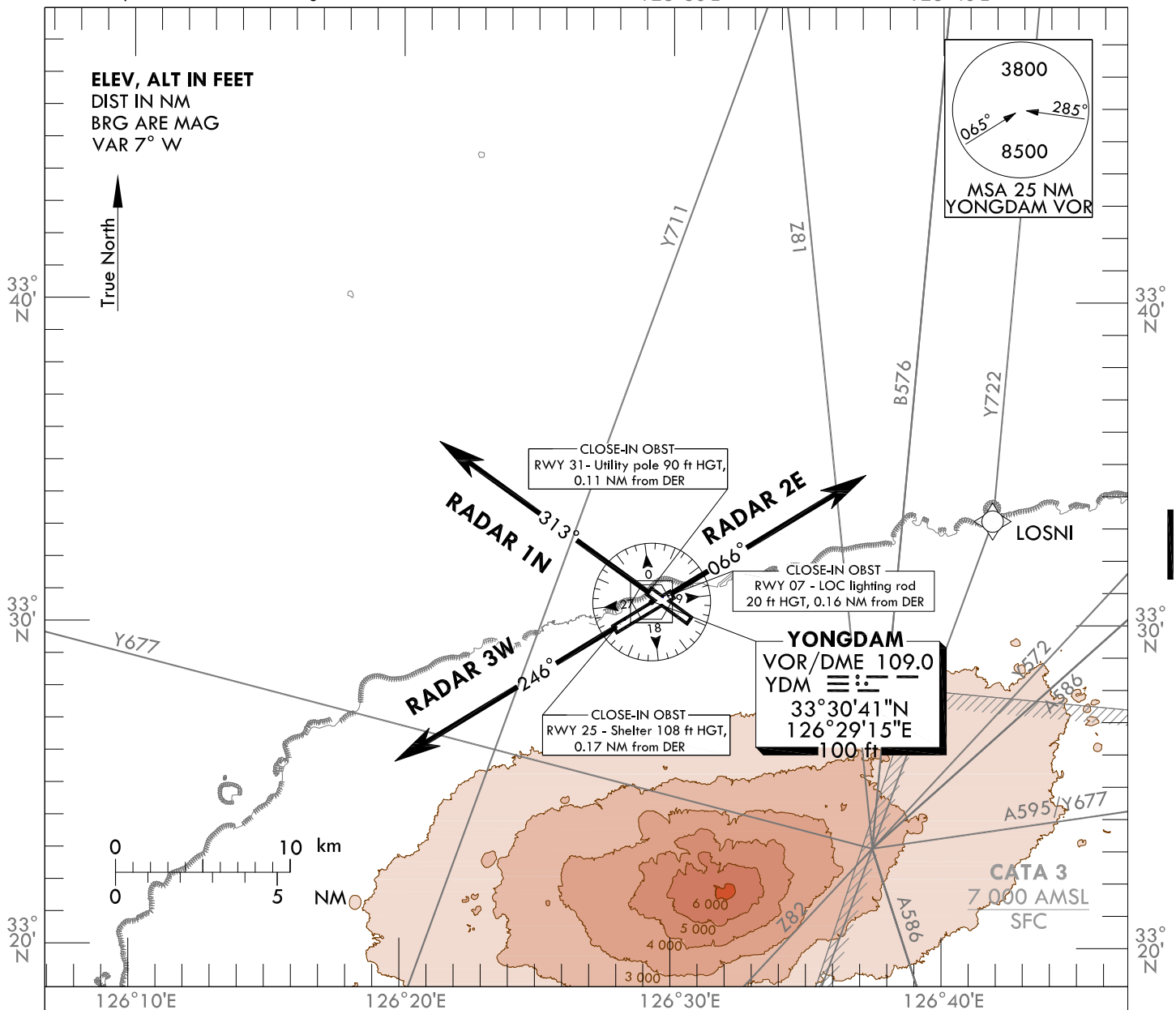
JEJU DEP 119.225  
121.2  
JEJU TWR 118.2  
118.55

JEJU/Jeju Intl(RKPC)  
RWY 07 RADAR 2E  
RWY 25 RADAR 3W  
RWY 31 RADAR 1N

Note : Departure under ICAO Flight Procedures.

126°30'E

126°40'E



RADAR TWO ECHO DEPARTURE

TAKE OFF RWY 07 : Climb on RWY HDG until reaching 2 200 ft for RADAR VECTOR.

\* Minimum 4.5% CG is required until 2 200 ft for ATC purpose.

RADAR THREE WHISKEY DEPARTURE

TAKE OFF RWY 25 : Climb on RWY HDG until reaching 3 000 ft for RADAR VECTOR.

\* Minimum 3.7% CG is required until 1 400 ft for OBST avoidance.

RADAR ONE NOVEMBER DEPARTURE

TAKE OFF RWY 31 : Climb on RWY HDG until reaching 2 200 ft for RADAR VECTOR.

\* Minimum 4.5% CG is required until 2 200 ft for ATC purpose.

NOTE : These procedures are available only for aircraft that don't satisfy RNAV 1 navigation specification.

Change : Amended radial(312° → 313°, 065° → 066°).

**INTENTIONALLY**

**LEFT**

**BLANK**